

# SafeGuard K-Frame™

Standalone secure tablet enclosure  
for kiosk-based applications



The K-Frame™ is a stylish yet substantial stand-alone tablet enclosure, suitable for kiosk applications, that is robust enough to withstand everyday use in busy environments. It combines both aesthetics and comprehensive security, in addition to providing a modularity not seen before in a product of its type.

The tablet itself sits on a sleeve designed specifically for a wide range of popular tablet models within the body of

the K-Frame enclosure. The solution is future proofed and should there be a technology re-fresh with a different tablet, it is simply the case of exchanging the solution fascia and sleeve rather than the entire enclosure.

Built with the latest in screw-less secure barrel locking technology from Kensington, the K-Frame offers maximum security without losing the essential style and ease of use associated with tablets.

## FEATURES

Robust enclosure for standalone everyday use

Secured by new ClickSafe barrel lock

Maximum security – no access to any mounting screws

Modular/upgradable (multi tablet capable)

Internal cable management including power supply (dependent on size)

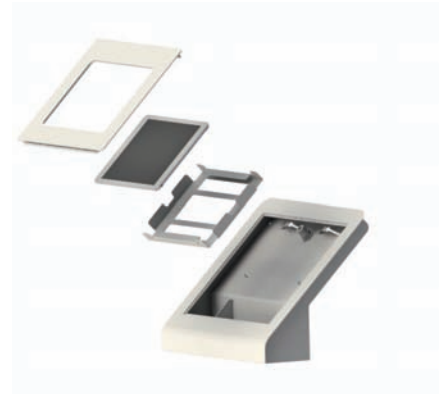


TECHNOLOGY MOUNTING SOLUTIONS

[www.ergonomic-solutions.net](http://www.ergonomic-solutions.net)

# SafeGuard K-Frame Technical Specifications

<b>Back plate</b>	Steel
<b>Insert</b>	Steel
<b>Front/top</b>	Steel
<b>Inner front</b>	Steel
<b>Size (LxWxH)</b>	320 x 238 x 275mm
<b>Weight</b>	6.2 kg.
<b>Mounting options</b>	Screws into counter
<b>Lock</b>	Kensington barrel lock
<b>Colours</b>	Available in black or white, as standard



## SafeGuard K-Frame Ordering Options



K-FRAME	DESCRIPTION
SPKF001-nn	K-Frame

K-FRAME INSERT	DESCRIPTION
SPINS001-nn	Insert (iPad 2,3 & 4)
SPINS046-nn	Insert (iPad Air)
SPINS072-nn	Insert (iPad Air 2)
SPINS043-nn	Insert (Galaxy Tab 3)
SPINS064-nn	Insert (Galaxy Tab 4)
SPINS022-nn	Insert (HP ElitePad 900/1000)
SPINS076-nn	Insert (Toshiba WT10)
SPINS075-nn	Insert (Galaxy Tab S)



*\* Please note that the configuration numbers for the new K-Frame insert will follow the same structure as that for the XFrame i.e. SPINS nnnn-nn (where -nn denotes the colour)*

For further information:  
[www.ergonomic-solutions.net](http://www.ergonomic-solutions.net)

Ergonomic Solutions International Ltd  
 B1 Longmead Business Centre  
 Blenheim Road  
 EPSOM KT19 9QQ,  
 United Kingdom  
 Tel: +44 (0) 1372 728872  
 Fax: +44 (0) 1372 726699



© 2015 Ergonomic Solutions  
 Safeguard K-Frame Rev:01/2015

TECHNOLOGY MOUNTING SOLUTIONS

[www.ergonomic-solutions.net](http://www.ergonomic-solutions.net)